



ARTSPACE FEED & GRAIN

130 W 3rd St, Loveland, CO, 80537

RESIDENTIAL AND COMMERCIAL LEASING OPPORTUNITIES

Lis & Earl Sethre Residential Wing | Barry Floyd Studio Wing made possible through the generous donation of Teresa & Paul Mueller

artspace

RATIO

Artspace Feed & Grain Overview

Artspace redeveloped the iconic Feed & Grain into a **creative-centric, mixed-use property** to complete the Artspace Loveland Arts Campus — the inspiration for the Space to Create Colorado program.

The Feed & Grain provides **nine units of live/work housing** for creatives and their families within the Lis & Earl Sethre Residential Wing; along with **4,000 square feet of sustainable commercial space** for creative entrepreneurs within the Barry Floyd Studio Wing made possible through the generous donation of Teresa & Paul Mueller.

These live/work units are provided to households making **below 120% AMI (Area Median Income)**.

Individual and Commercial rents will vary by square footage.

The completed Artspace Loveland Arts Campus bookends substantial improvements made in downtown Loveland in recent years, fulfilling the community's vision to expand economic opportunities and arts access while **ensuring that Loveland remains a model for artist-led community development in Colorado.**





Loveland Arts Campus

130 and 140 W 3rd St
Loveland, CO, 80537



Walk Score 81

Most errands can be accomplished on foot.



Bike Score 76

Biking is convenient for most trips.

Artspace Loveland Arts Campus

ARTSPACE FEED & GRAIN

Lis & Earl Sethre Residential Wing

Residential

Unit #01

1ST FLOOR

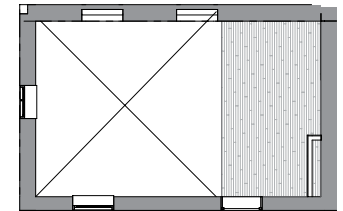
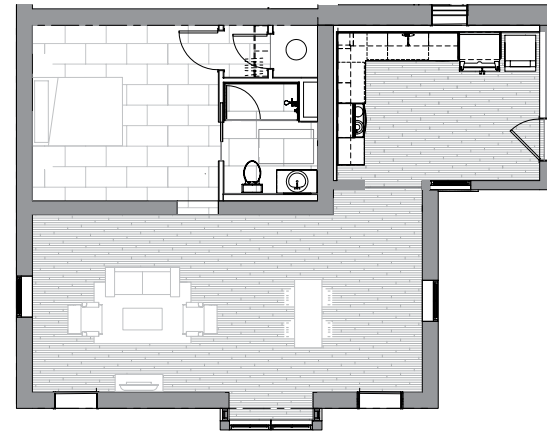


- 1,100 sq. ft.
- 1-bedroom, 1-bathroom unit
- Starting at \$1,850/month
- Hardwood Floors
- Washer-Dryer In-Unit
- Black Stainless Steel Appliances

UNIT 01 (FIRST FLOOR)

UNIT 01 (LOFT)

FIRST FLOOR



ARTSPACE FEED & GRAIN

Lis & Earl Sethre Residential Wing

Residential

Unit #02

1ST AND 2ND FLOORS

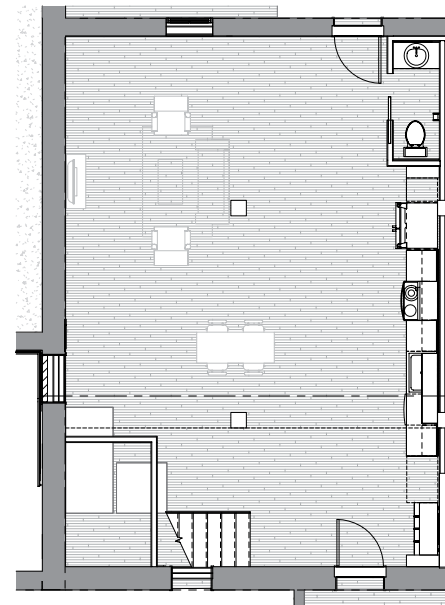


- 1,870 sq. ft.
- 2-bedroom, 2-bath unit
- Starting at \$2,150/month
- Hardwood Floors
- Washer-Dryer In-Unit
- Black Stainless Steel Appliances
- Lofted 2nd Floor Bedroom
- Interior and Exterior Entrances Into Unit

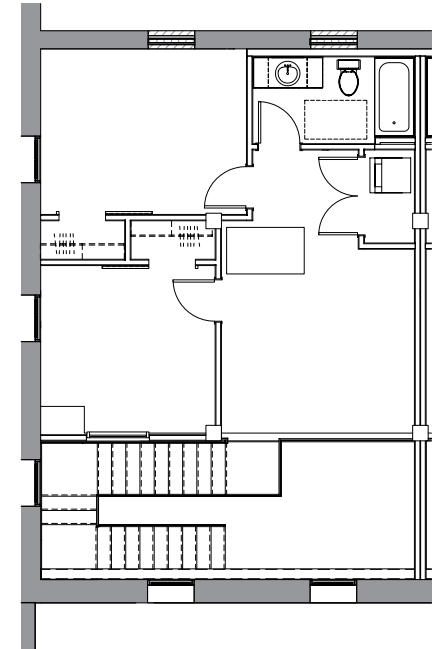
FIRST FLOOR



UNIT 02 (1ST FLOOR)



UNIT 02 (2ND FLOOR)



ARTSPACE FEED & GRAIN

Lis & Earl Sethre Residential Wing

Residential

Unit #03

1ST AND 2ND FLOORS

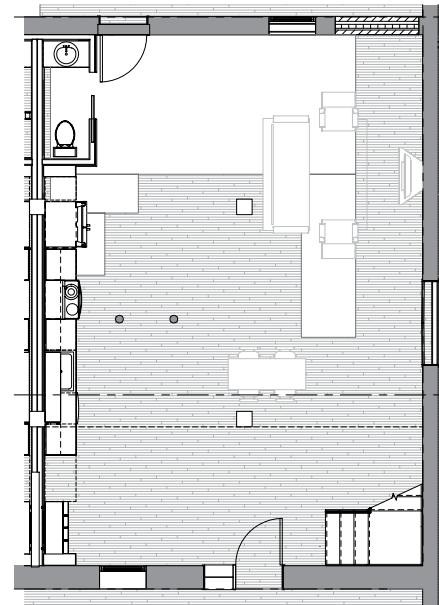


- 1,870 sq. ft.
- 2-bedroom, 2-bath unit
- Starting at \$2,150/month
- Hardwood Floors
- Washer-Dryer In-Unit
- Black Stainless Steel Appliances

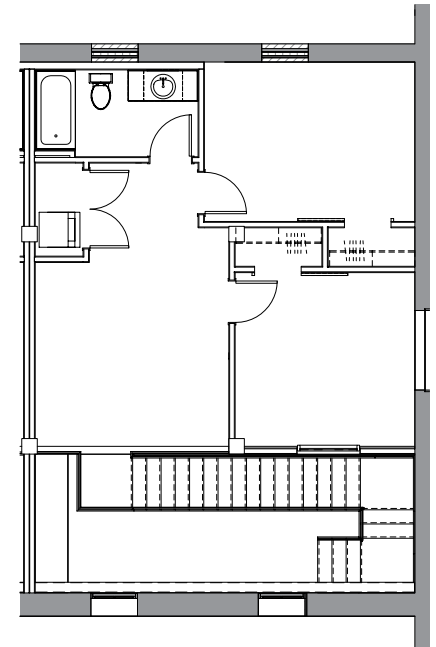
FIRST FLOOR



UNIT 03 (1ST FLOOR)



UNIT 03 (2ND FLOOR)



ARTSPACE FEED & GRAIN

Lis & Earl Sethre Residential Wing

Residential

Unit #04

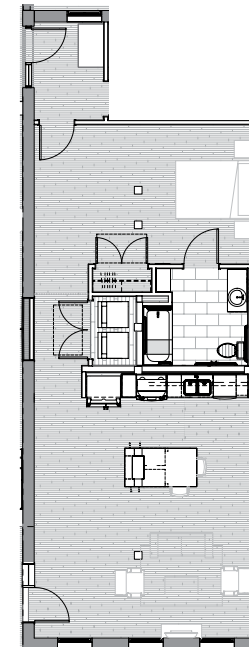
1ST FLOOR



- 905 sq. ft.
- 1-bedroom, 1-bath unit
- Starting at \$1,800/month
- Hardwood Floors
- Washer-Dryer In-Unit
- Black Stainless Steel Appliances
- ADA Appliances
- ADA Layout
- Interior and Exterior Entrances Into Unit

UNIT 04 (1ST FLOOR)

FIRST FLOOR



ARTSPACE FEED & GRAIN

Lis & Earl Sethre Residential Wing

Residential

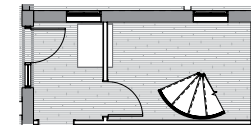
Unit #05

1ST FLOOR

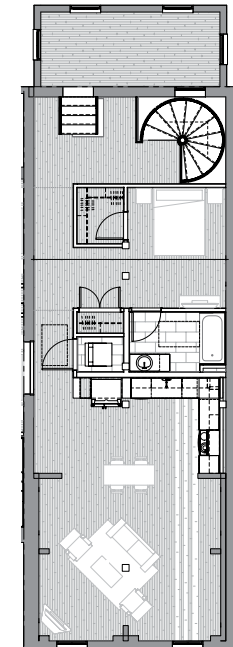


- 1,390 sq. ft.
- 1-bedroom, 1-bath unit
- Starting at \$1,850/month
- Hardwood Floors
- Washer-Dryer In-Unit
- Black Stainless Steel Appliances
- Sun Room

UNIT 05 (1ST FLOOR ENTRY)



UNIT 05 (2ND FLOOR)



FIRST FLOOR



ARTSPACE FEED & GRAIN

Lis & Earl Sethre Residential Wing

Residential

Unit #06

1ST AND 2ND FLOORS

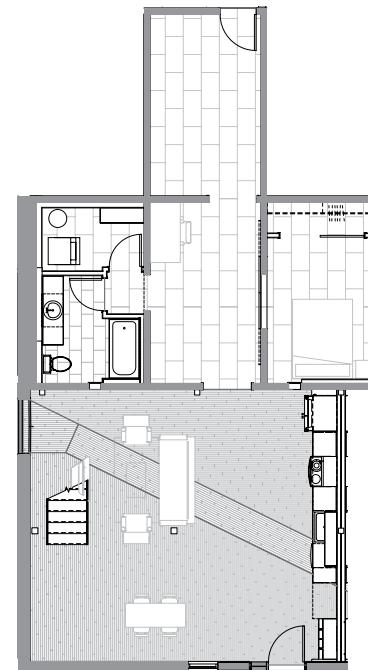
- 1,725 sq. ft.
- 2-bedroom, 2-bath unit
- Starting at \$2,150/month
- Hardwood Floors
- Washer-Dryer In-Unit
- Black Stainless Steel Appliances
- In-Unit Foyer and Storage
- Interior and Exterior Entrances Into Unit



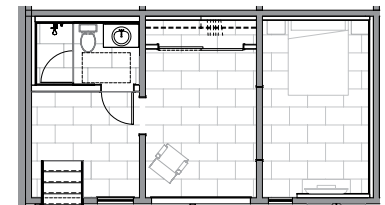
FIRST FLOOR



UNIT 06 (1ST FLOOR)



UNIT 06 (2ND FLOOR)



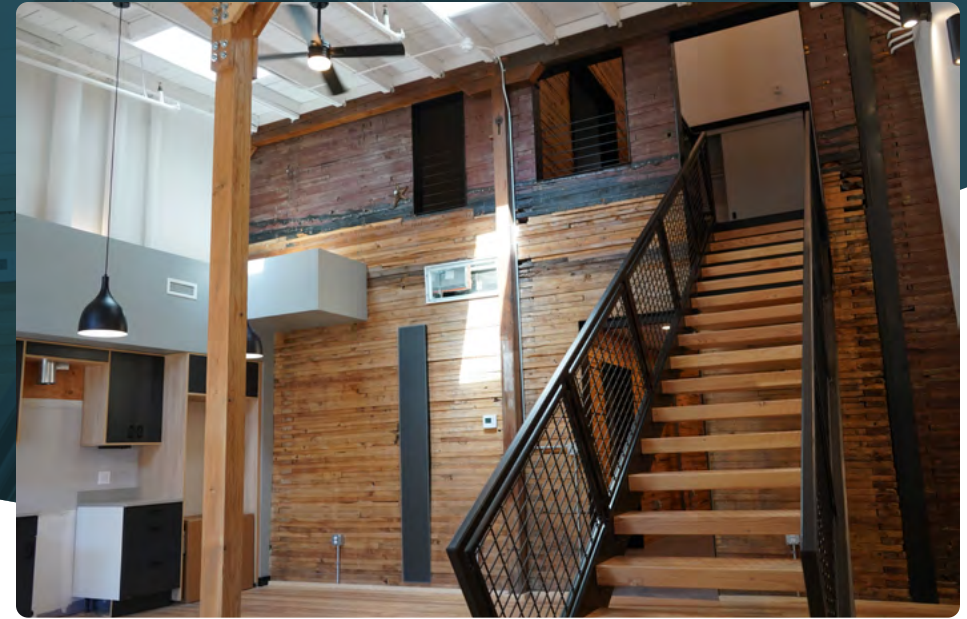
ARTSPACE FEED & GRAIN

Lis & Earl Sethre Residential Wing

Residential

Unit #07

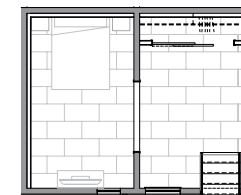
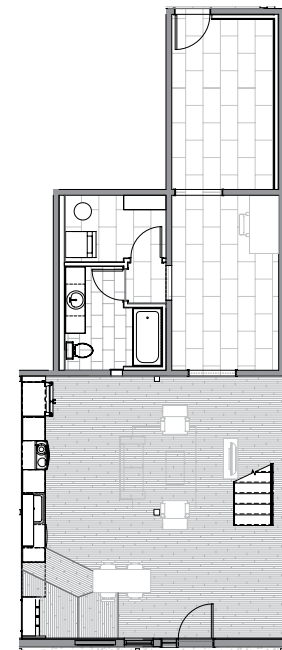
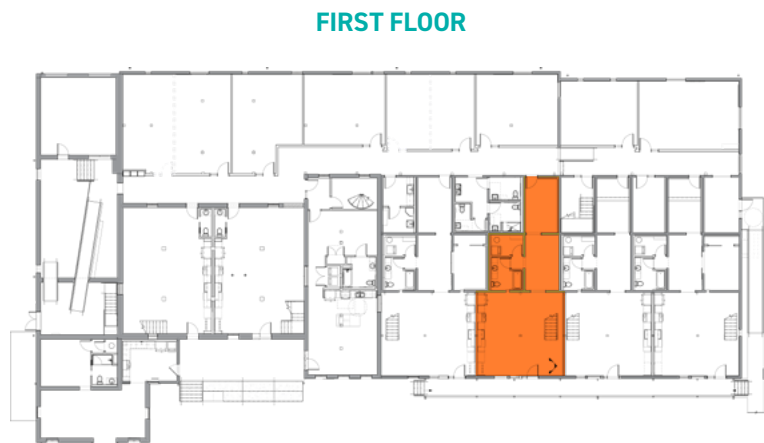
1ST AND 2ND FLOORS



- 1,345 sq. ft.
- 2-bedroom, 2-bath unit
- Starting at \$1,850/month
- Hardwood Floors
- Washer-Dryer In-Unit
- Black Stainless Steel Appliances
- In-Unit Foyer and Storage
- Interior and Exterior Entrances Into Unit

UNIT 07 (1ST FLOOR)

UNIT 07 (2ND FLOOR)



ARTSPACE FEED & GRAIN

Lis & Earl Sethre Residential Wing

Residential

Unit #08

1ST AND 2ND FLOORS

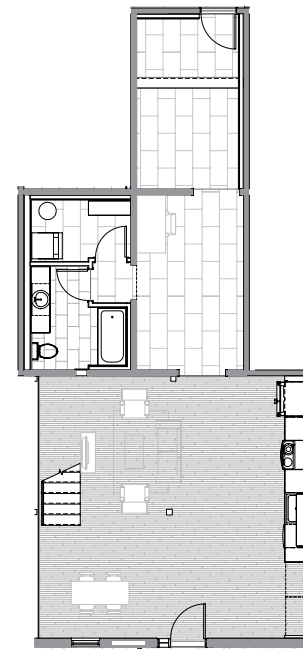


- 1,345 sq. ft.
- 2-bedroom, 2-bath unit
- Starting at \$1,850/month
- Hardwood Floors
- Washer-Dryer In-Unit
- Black Stainless Steel Appliances
- In-Unit Foyer and Storage
- Interior and Exterior Entrances Into Unit

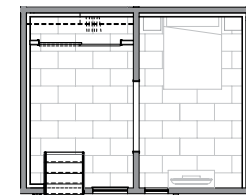
FIRST FLOOR



UNIT 08 (1ST FLOOR)



UNIT 08 (2ND FLOOR)



ARTSPACE FEED & GRAIN

Lis & Earl Sethre Residential Wing

Residential

Unit #09

1ST AND 2ND FLOORS

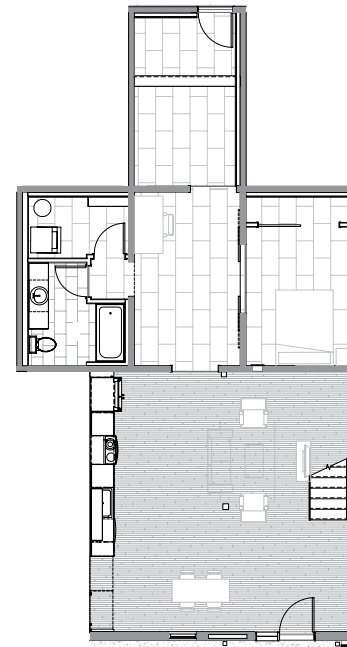


- 1,660 sq. ft.
- 2-bedroom, 2-bath unit
- Starting at \$2,150/month
- Hardwood Floors
- Washer-Dryer In-Unit
- Black Stainless Steel Appliances
- In-Unit Foyer and Storage
- Interior and Exterior Entrances Into Unit

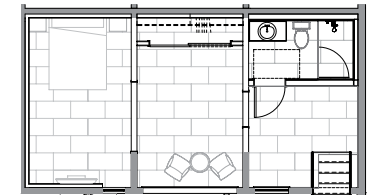
FIRST FLOOR



UNIT 09 (1ST FLOOR)



UNIT 09 (2ND FLOOR)



ARTSPACE FEED & GRAIN

Barry Floyd Studio Wing made possible through the generous donation of Teresa & Paul Mueller

Commercial | All Units 1ST FLOOR



Unit	Total Square Footage	Gross Rents Starting at \$1.50/sq. ft.
110	464 sq. ft.	\$ 696.00
112	830 sq. ft.	\$ 1,245.00
113	475 sq. ft.	\$ 713.00
114	437 sq. ft.	\$ 656.00
116	500 sq. ft.	\$ 750.00
117	445 sq. ft.	\$ 668.00
118	380 sq. ft.	\$ 570.00
119	520 sq. ft.	\$ 780.00



Artspace Feed & Grain Contact

Residential and Commercial Leasing

To learn more about our residential
unit opportunities, please contact

Toi Dugar

feedandgrain@artspace.org

For commercial unit
opportunities, please contact

commercial.leasing@artspace.org

